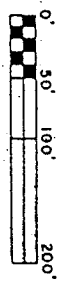


VICINITY MAP

BIG POWDERHORN PLAT NO. 1

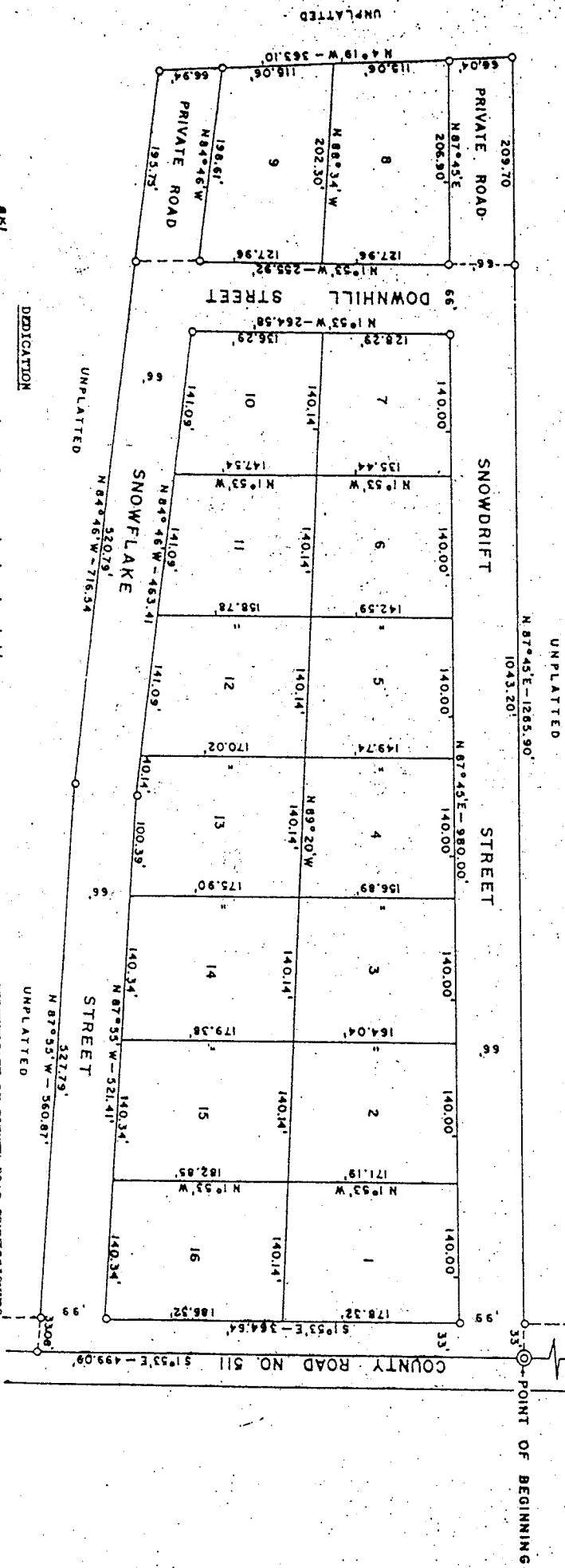
PART OF NE 1/4 - SE 1/4 - SECTION 31, T. 48 N. - R. 46 W.
IRONWOOD TOWNSHIP - GOGEBIC COUNTY, MICHIGAN

SCALE 1" = 100'



LEGEND

MERIDIAN ESTABLISHED FROM ORIGINAL GOVERNMENT SURVEY.
ALL DIMENSIONS ARE IN FEET.
CONCRETE MONUMENTS ARE SHOWN AS THUS "O".
LOT CORNERS CONSISTS OF 3/4" STEEL PINS.



Big Powderhorn Mountain Corporation, a corporation duly organized and existing under the laws of the State of Michigan by Louis A. Ohaller, as President and

DEDICATION

COMMITTEE OF COUNTY ROAD COMMISSIONERS