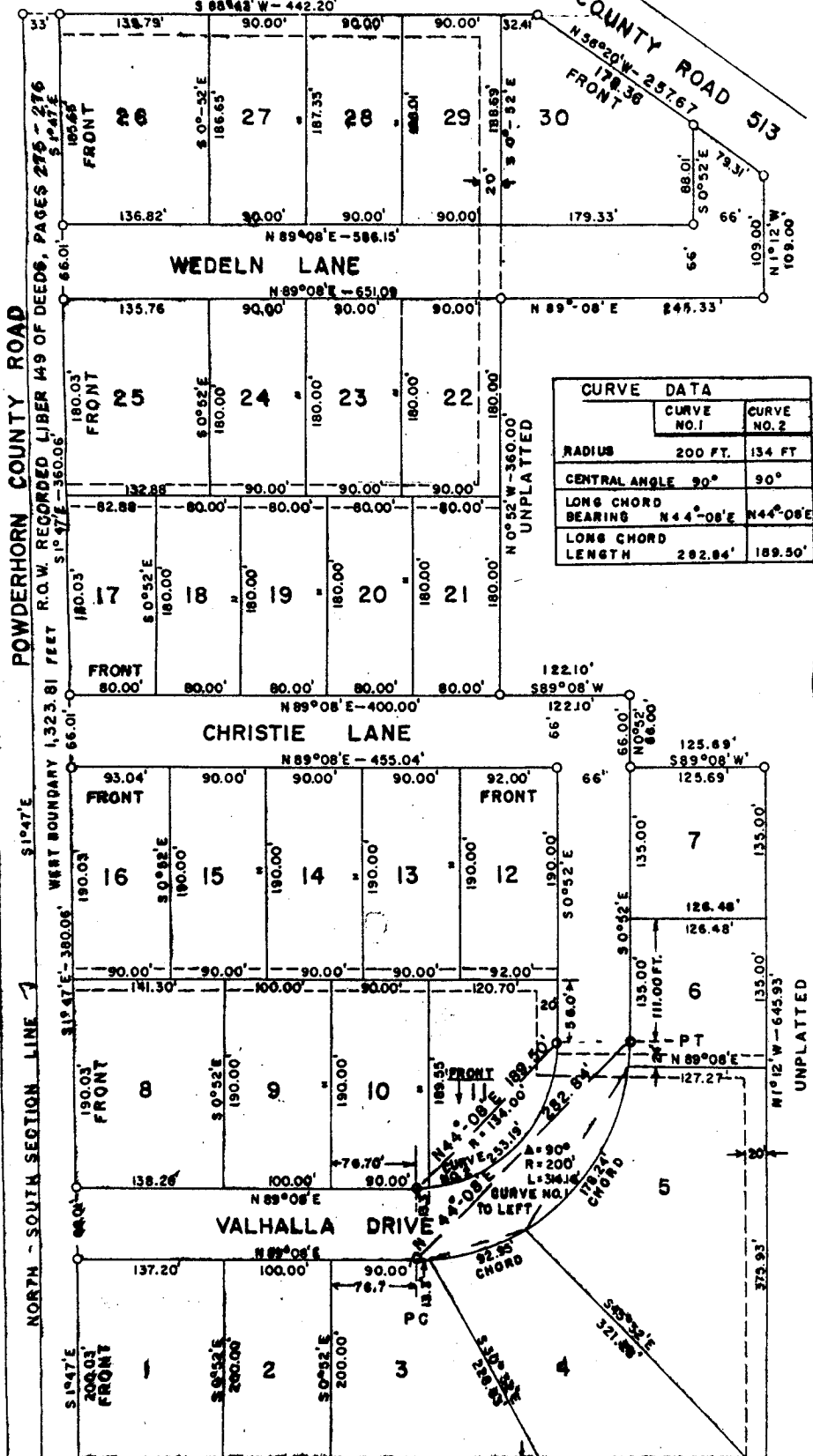


PART OF W1/2-SW1/4
IRONWOOD

UNPLATTED
S 88°42' W - 442.20'

66' R.O.W. RECORDED
LIBER 71 OF DEEDS
PAGES 545 & 546

COUNTY ROAD 513
N 36°20' W - 257.67'
FRONT



CURVE DATA	
CURVE NO. 1	CURVE NO. 2
RADIUS	200 FT. 134 FT.
CENTRAL ANGLE	90° 90°
LONG CHORD BEARING	N 44°-08'E N 44°-08'E
LONG CHORD LENGTH	282.84' 189.50'

POWDERHORN COUNTY ROAD

NORTH - SOUTH SECTION LINE

UNPLATTED

UNPLATTED



W b d s p a t h g s C O S t h g s

T I